

1 2 3 4 5 6 7 8

A

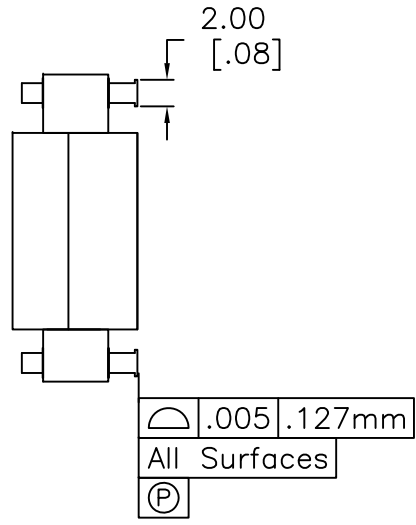
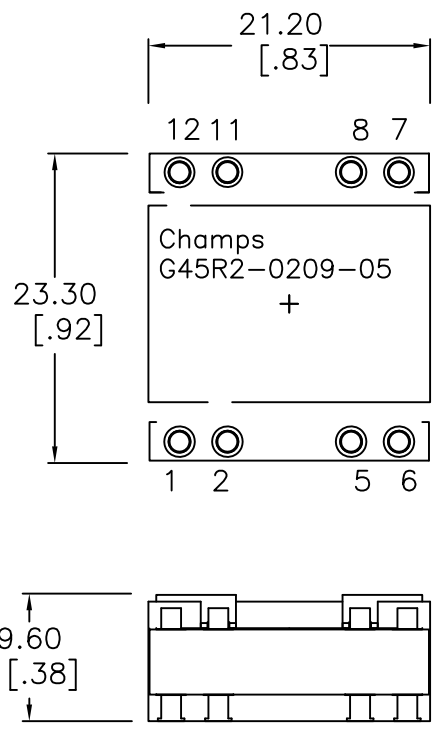
B

C

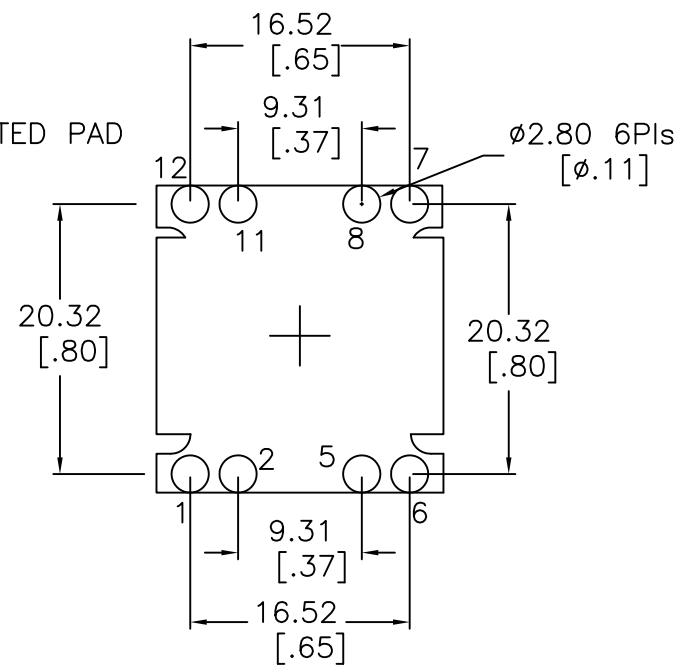
D

E

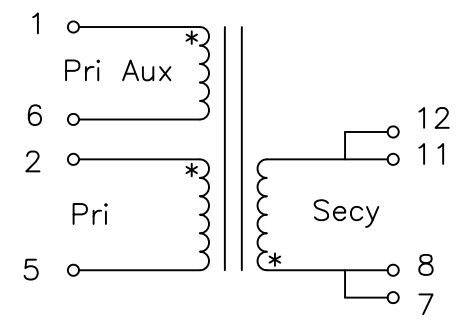
F



SUGGESTED PAD LAYOUT



Schematic



- NOTES:
1. TURNS RATIO [2-5] : [7,8 - 11,12] = 0.22 +/--2% || [2-5] : [1-6] =0.40 +/--2%
 2. DCR [2-5]= 1.3 mohm Nom., [7,8 - 11,12]= 16.0 mohm Nom., [1-6]= 100 mohm Max
 3. Inductance [2-5]= 12 uH Nom, 10.2 Min at 100KHz, 1.0 VRMS @ 25C
 4. Leakage Inductance [2-5] Short [7,8-11,12] = 25 nH Nom, 40 nH Max @100 KHz
 5. Dielectric Strength [2-5] to [7-11] 1750 VDC | [1-6] to [2-5] 500Vrms 60 Hz [1-6],[2-5] to CORE 1750 VDC, [7-11] to CORE 500 VDC
 6. Capacitance [2:7] = 225 pF Nom, 350 Max
 7. Weight 16.8 grams Nom | RoHS Compliant | Pin Composition Sn/Ag 96/4

ORDERING INFORMATION:

1. Order Per Part # G45R2-0209-05. Parts ship in trays unless otherwise specified.
2. For Tape & Reel packaging append "R" to PN, e.g. G45R2-0209-05-R.
Tape & Reel packaging is in accordance with Champs Dwg T40-4600014.
3. Std 180 parts per reel | 40 parts per tray.

No.		DESCRIPTION		REVISIONS	DATE	APPR
CHAMPS TECHNOLOGIES						
THIRD ANGLE PROJECTION						
TOLERANCES +/- 1.0 UNLESS OTHERWISE INDICATED		SIGN	DATE	Champs No. G45R2 0209-05		
.XXX ±.254 MM	DRAWN			Customer		ISSUE
.XX ±.76 MM				Part #:		A
.X ANGLE ±	CHKD			APPR	HE	1/29/10
		SIZE		SCALE 2:1		