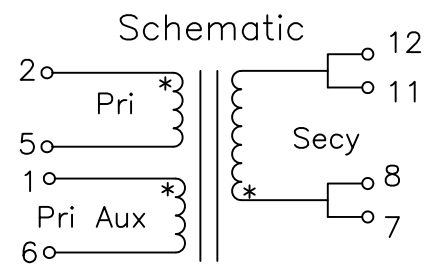
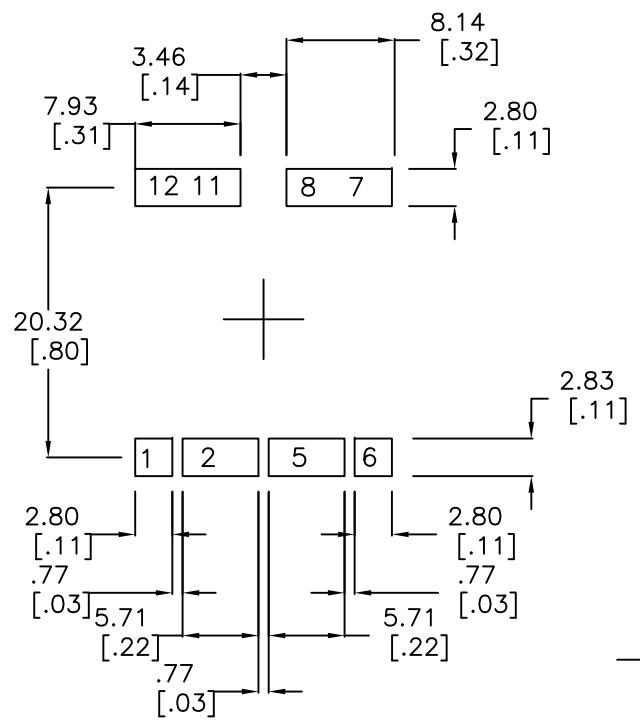
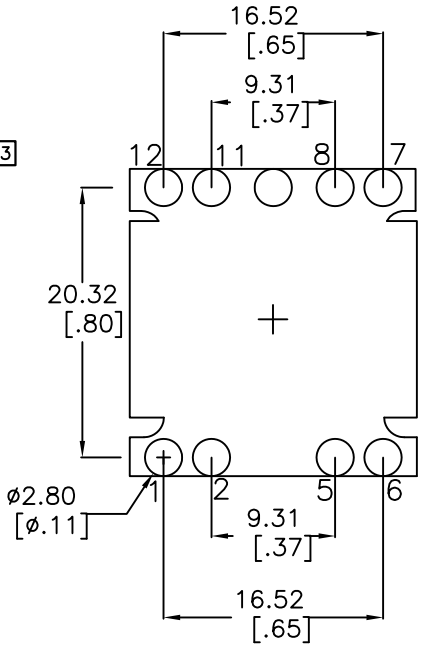
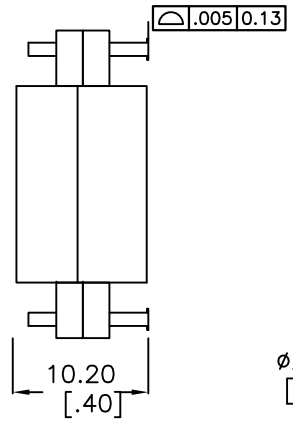
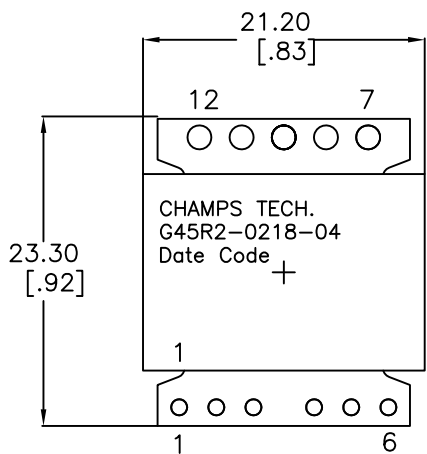


1 2 3 4 5 6 7 8

A
B
C
D
E
F

SUGGESTED PAD LAYOUT

G45R2 UNIVERSAL PAD LAYOUT



- NOTES:
1. TURNS RATIO [2-5] : [7,8-11,12] = 0.111 +/-2% || [2-5] : [1-6] = 0.50 +/-2%
 2. DCR [2-5]=1.3 mohm Nom, [7-12]=74 mohm Nom, [1-6]= 300 mohm Max
 3. Inductance [2-5] = 10.4 uH Nom, 8.5 uH Min 10KHz, 0.1 VRMS @ 25C
 4. Leakage Inductance [2-5] Short [7-12] = 22 nH Nom 25 Max @100 KHz
 5. Dielectric Strength [2,5] to [7-12] 1750 VDC,
[1-6] to [2-5] 500VAC | [1-6],[2-5] to CORE 1750 VDC, [7-12] to CORE 500 VDC
 6. Weight 14 grams Max | RoHS Compliant

No.	DESCRIPTION	REVISIONS	DATE	APPR
CHAMPS TECHNOLOGIES				
THIRD ANGLE PROJECTION 	SIGN	DATE	Champs No. G45R2-0218-04	
	DRAWN	E.L.	9/04/08	Customer ISSUE A
	CHKD	J.L.	9/04/08	Part #: REV OO
TOLERANCES +/- 1.0 UNLESS OTHERWISE INDICATED	APPR	HE	9/04/08	SIZE A4 SCALE 2:1