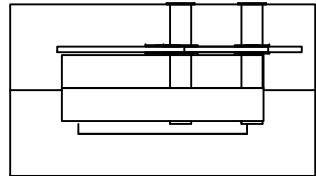
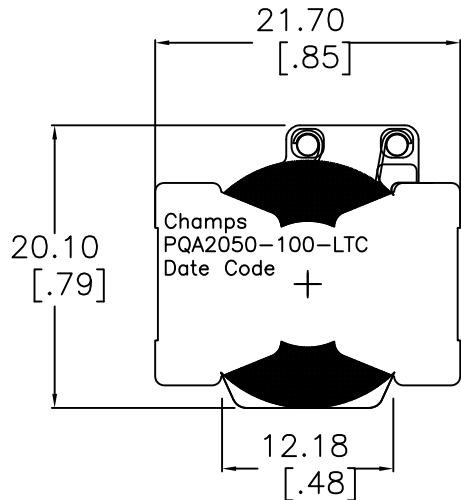


1 2 3 4 5 6 7 8

A



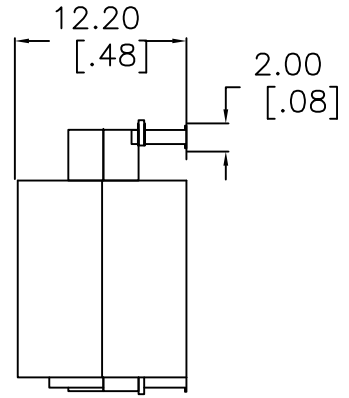
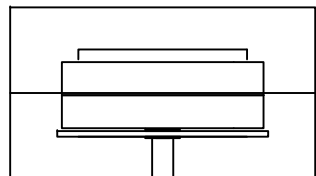
B



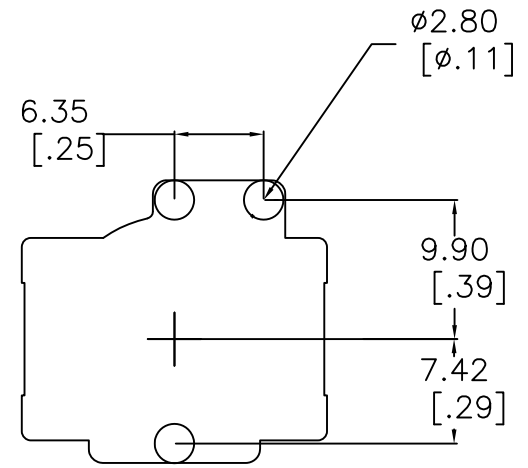
C

D

E



SUGGESTED
PAD
LAYOUT
Rounded
Pad



A

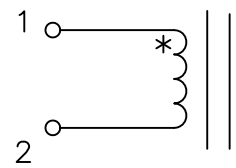
B

C

D

E

Schematic



INDUCTANCE [1-2] = 100uH Nom, 92 Min. @10kHz/0.1V 4.8 Adc
 INDUCTANCE [1-2] = 85 uH Min @10kHz/0.1V 5.8 Adc
 DCR [1-2] = 56 mohms Nom +/-10%
 DIELECTRIC ISOLATION > 500 VDC [1-2] : CORE
 SATURATION CURRENT @25C = 5.8 Adc | @85C = 5.2 Adc
 HEATING CURRENT FOR 40C RISE AT 25C AMBIENT = 5.8 Adc

F

No.		DESCRIPTION		REVISIONS	DATE	APPR
CHAMPS TECHNOLOGIES						
THIRD ANGLE PROJECTION						
TOLERANCES +/- 1.0 UNLESS OTHERWISE INDICATED		SIGN	DATE	Champs No. PQA2050-100-LTC		
.XXX ±		DRAWN	HE	8/20/08	Customer	ISSUE
.XX ±		CHKD			Part #: INDUCTOR	REV
.X		APPR			SIZE	00
ANGLE ±					SCALE 2:1	