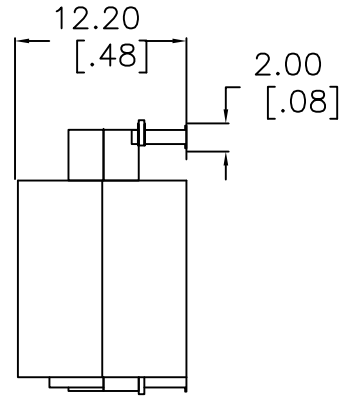
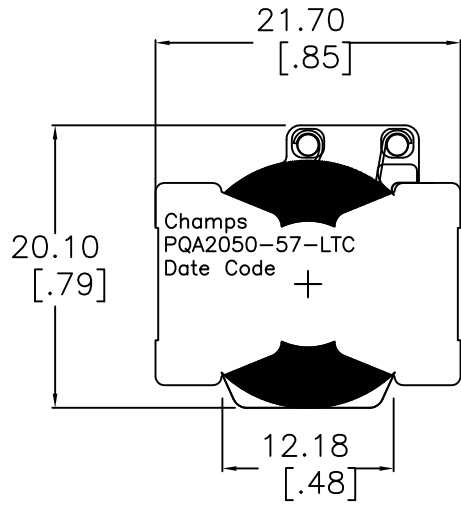
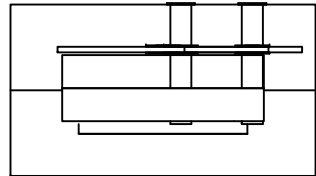
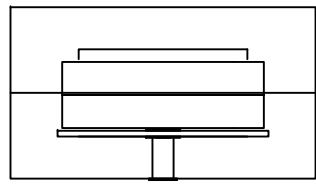
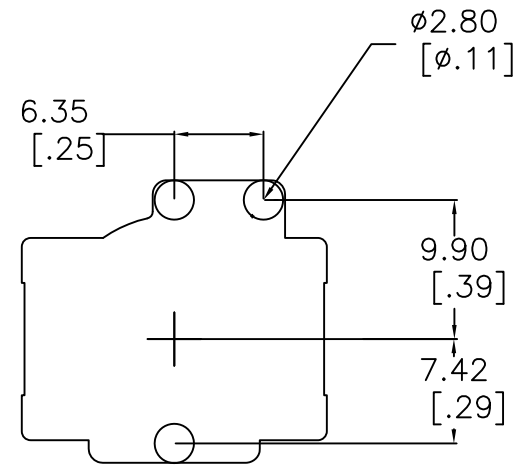


A
B
C
D
E
F

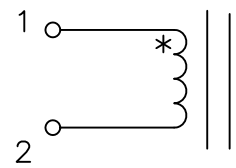
1 2 3 4 5 6 7 8



SUGGESTED
PAD
LAYOUT
Rounded
Pad



Schematic



INDUCTANCE [1-2] = 57uH Nom, 51 Min. @10kHz/0.1V 5.8Adc
 DCR [1-2] = 34 mohms Nom, 38 Max
 DIELECTRIC ISOLATION > 500 VDC [1-2] : CORE
 SATURATION CURRENT @25C = 6.6Adc | @85C = 5.8Adc
 HEATING CURRENT FOR 40C RISE AT 25C AMBIENT = 6.5Adc
 RoHS Level 6/6 Compliant
 Operating temperature -40C to +85C

No.		DESCRIPTION		REVISIONS	DATE	APPR
THIRD ANGLE PROJECTION						
CHAMPS TECHNOLOGIES						
TOLERANCES +/- 1.0 UNLESS OTHERWISE INDICATED		SIGN	DATE	Champs No. PQA2050-57-LTC		
DRAWN		HE	8/20/08	Customer	INDUCTOR	ISSUE A
CHKD				Part #:		REV 00
APPR				SIZE	SCALE 2:1	