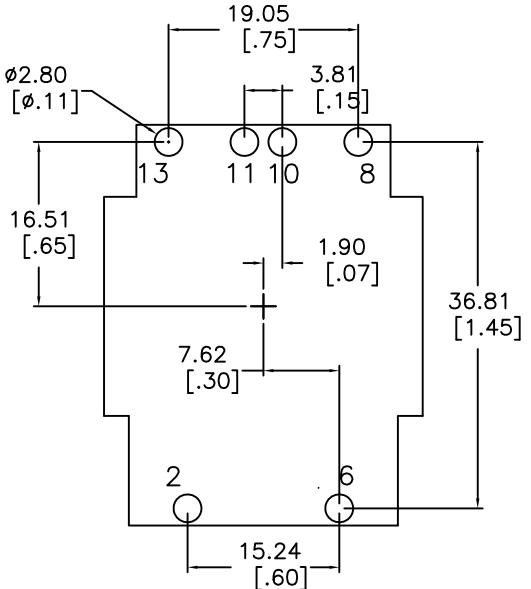
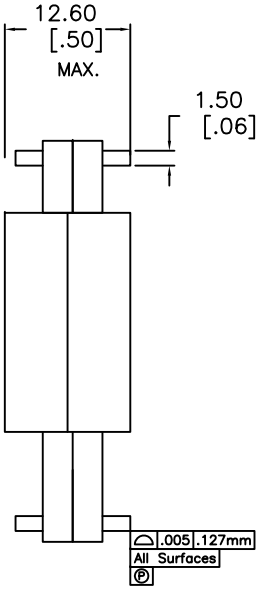
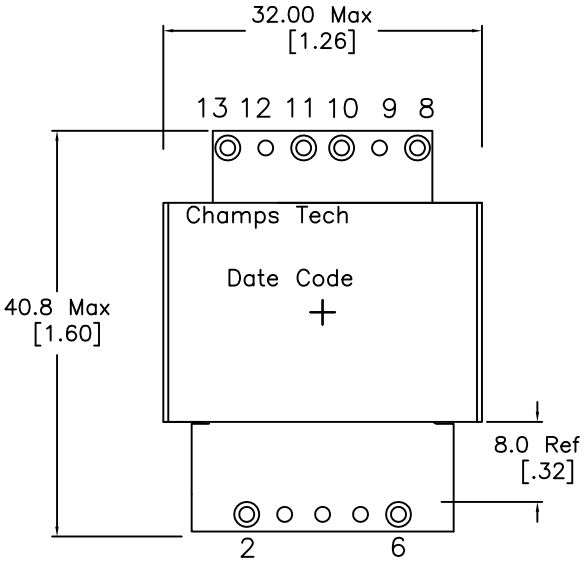
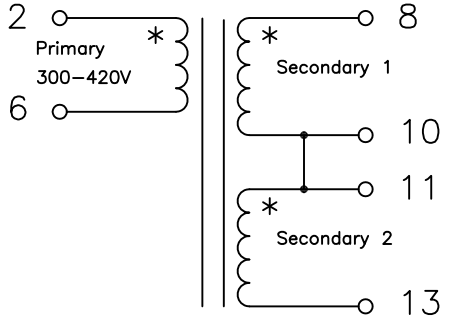


Suggested Pad Layout



SCHEMATIC



ELECTRICAL INFORMATION:

- 1. DCR [2-6]= 190 mohm Nom, [8-13] = 13 mohm Nom,
- 2. Inductance [2-6] = 1.2 mH Nom, +/-10% @100KHz, 1.0 VRMS @ 25C
- 3. Leakage Inductance [2-6]= Short [8-13] = 5.3 uH Nom @100 KHz
- 4. Dielectric Strength 3 Sec Min: [2,6] to [8,13] to Core 3750 VAC II [8,13] : Core 500 Vdc
- 5. RoHS Compliant I Pin Composition Tin/Silver Plating
- 6. Volt-usec Rating = 1038 @100C
- 7. Operating Ambient Temp Rating: -55C to +100C

No.	DESCRIPTION	REVISIONS	DATE	APPR
THIRD ANGLE PROJECTION				
CHAMPS TECHNOLOGIES				
TOLERANCES +/- 1.0 UNLESS OTHERWISE INDICATED		SIGN	DATE	Champs No. 80R2-30AC-3208-1M2
.XXX ±	DRAWN	HE	03.09.15	Customer
.XX ±	CHKD			Part #:
.X	APPR			ISSUE A
ANGLE ±				REV 00
			SIZE	SCALE 150%