

1 2 3 4 5 6 7 8

A

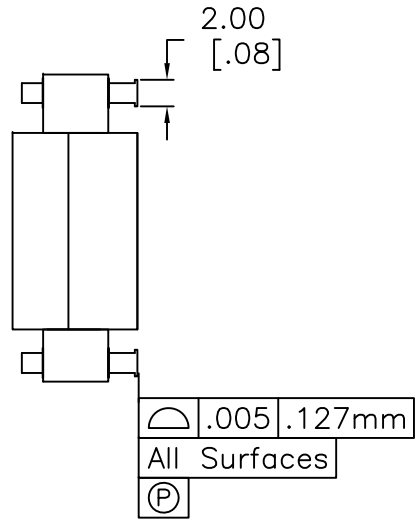
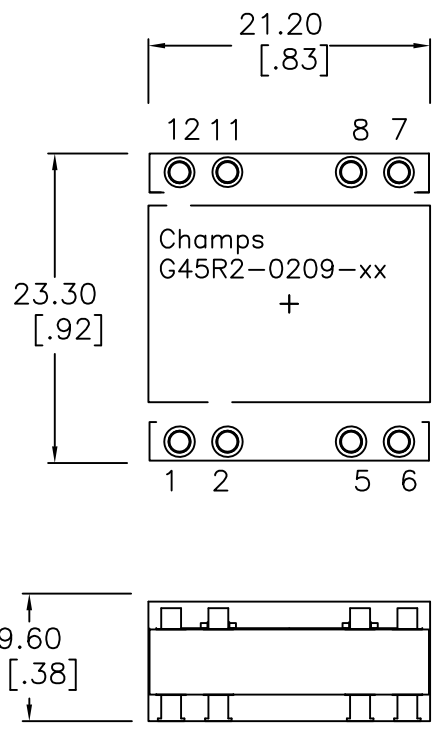
B

C

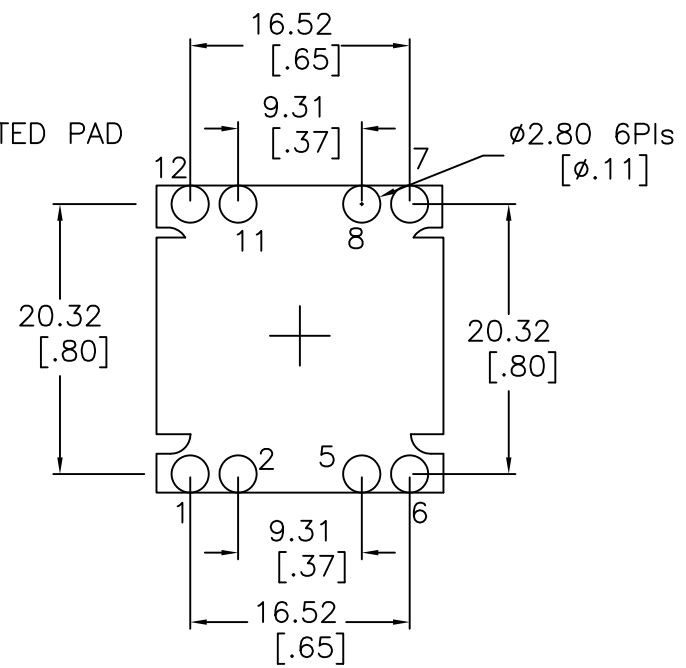
D

E

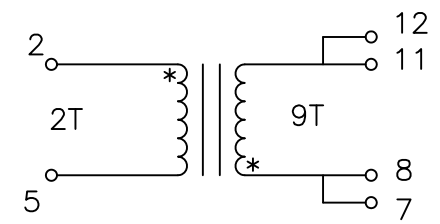
F



SUGGESTED PAD LAYOUT



Schematic



- NOTES:
1. DCR [2-5]= 1.3 mohm Nom., [7,8 - 11,12]= 16.0 mohm Nom.
  2. Inductance [2-5]= 12 uH Nom, 10.2 Min at 100KHz, 1.0 VRMS @ 25C
  3. Leakage Inductance [2-5] Short [7,8-11,12] = 25 nH Nom, 40 nH Max @100 KHz
  4. Dielectric Strength [2-5] to [7-11] 1750 VDC  
[2-5] to CORE 1750 VDC, [7-11] to CORE 500 VDC
  5. Capacitance [2:7] = 225 pF Nom, 350 Max
  6. Weight 16.8 grams Nom | RoHS Compliant | Pin Composition Sn/Ag 96/4

ORDERING INFORMATION:

1. Order Per Part # G45R2-0209-xx. Parts ship in trays unless otherwise specified.
2. For Tape & Reel packaging append "R" to PN, e.g. G45R2-0209-xx-R.  
Tape & Reel packaging is in accordance with Champs Dwg T40-4600014.
3. Std 180 parts per reel | 40 parts per tray.

No.		DESCRIPTION		REVISIONS	DATE	APPR
CHAMPS TECHNOLOGIES						
THIRD ANGLE PROJECTION						
TOLERANCES +/- 1.0 UNLESS OTHERWISE INDICATED		SIGN	DATE	Champs No. G45R2 0209-xx		
.XXX ±.254 MM	DRAWN			Customer		ISSUE
.XX ±.76 MM				Part #:		A
.X ANGLE ±	CHKD			SCALE 2:1	00	
	APPR	HE	1/29/10	SIZE		