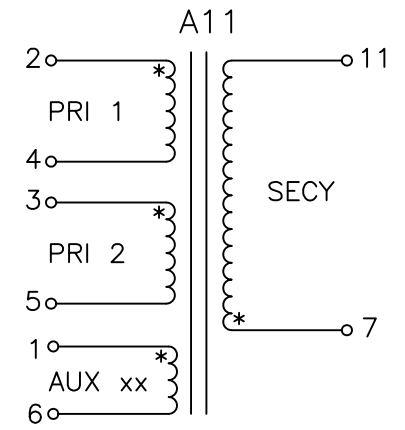
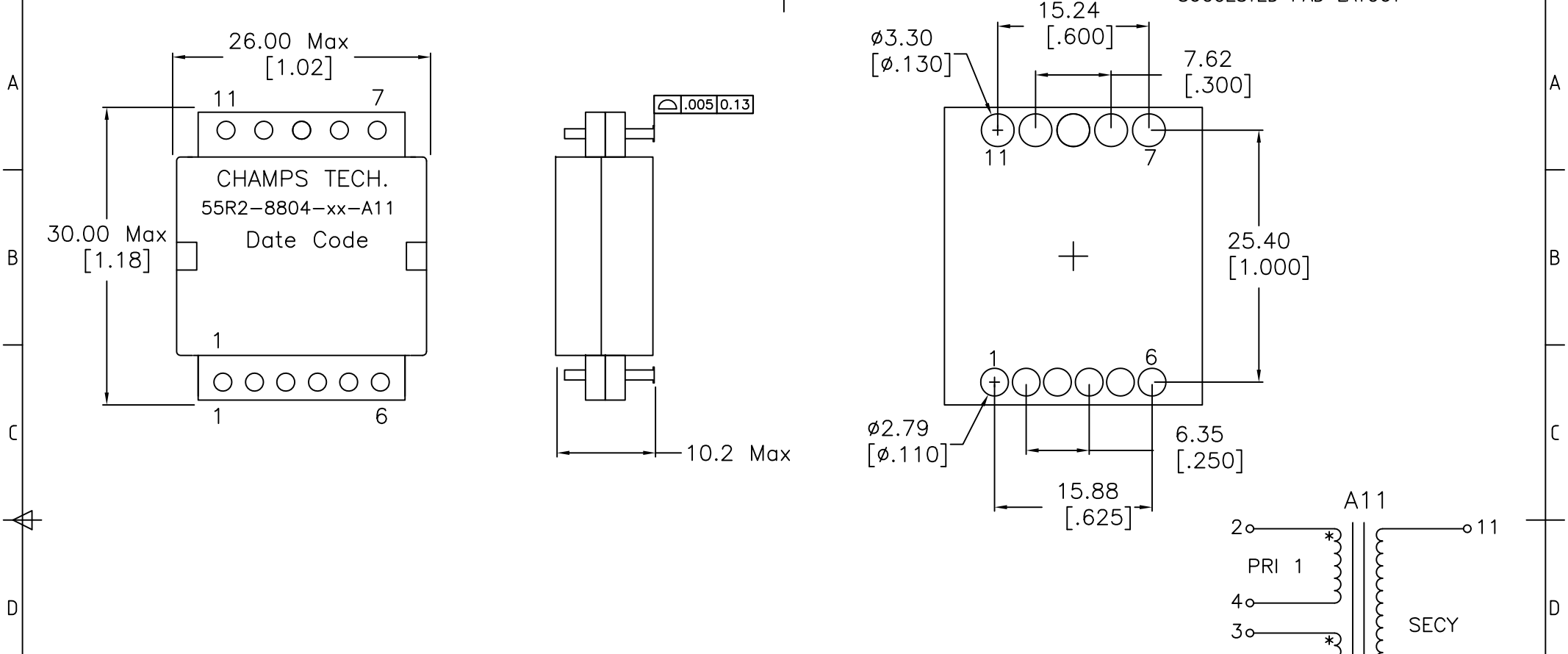


1 2 3 4 5 6 7 8 SUGGESTED PAD LAYOUT



ELECTRICAL INFORMATION:

1. TURNS RATIO [7-11] : [2-4] = [3-5] = 0.50 +/- 2%
2. DCR [2-4] = [3-5] = 28.0 mohm Nom., [7-11] = 3.5 mohm Nom, [1-6] = 300 mohm Max.
3. Inductance [2-5] = 1130uH Nom, 850 uH Min @10KHz, 0.1 VRMS @ 25C
4. Leakage Inductance [2-5] = Short [7-11] = 450nH Max @100 KHz
5. Dielectric Strength 6 Sec Min: [1,2,5,6] to [7,11] 1500 VDC | [2,5] to [1,6] 500 VDC
[1,2,5,6] to CORE 1500 VDC, [7,11] to CORE 500 VDC
6. Weight 18 grams Max | RoHS Compliant | Pin Composition Tin/Silver Plating

ORDERING INFORMATION:

1. Order Per Part # 55R2-8804-xx-A11. Parts ship in trays unless otherwise specified.
2. 25 parts per tray.

No.	DESCRIPTION	REVISIONS	DATE	APPR
THIRD ANGLE PROJECTION				
CHAMPS TECHNOLOGIES				
TOLERANCES +/- 1.0 UNLESS OTHERWISE INDICATED		SIGN	DATE	Champs No. 55R2-8804-xx-A11
DRAWN	HE	7/22/08	Customer	ISSUE A
CHKD			Part #:	REV 00
APPR			SIZE	SCALE 2:1