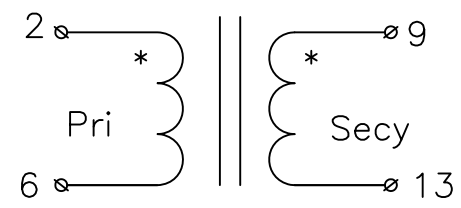
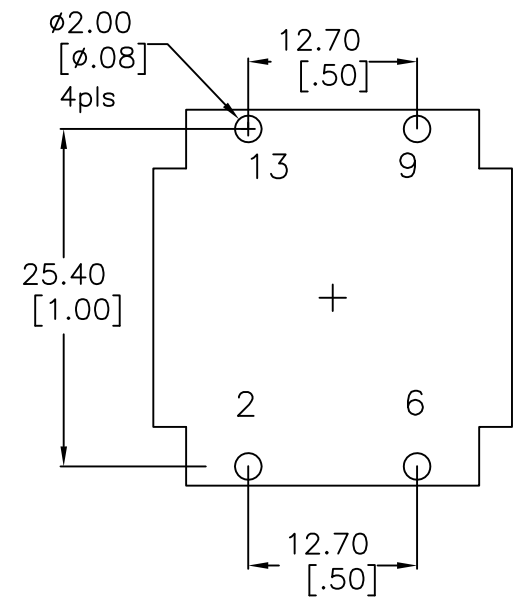
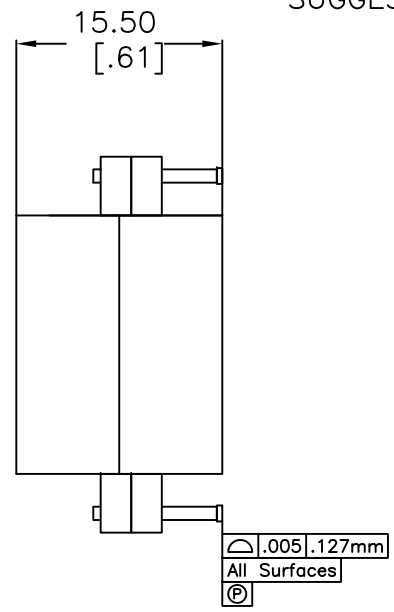
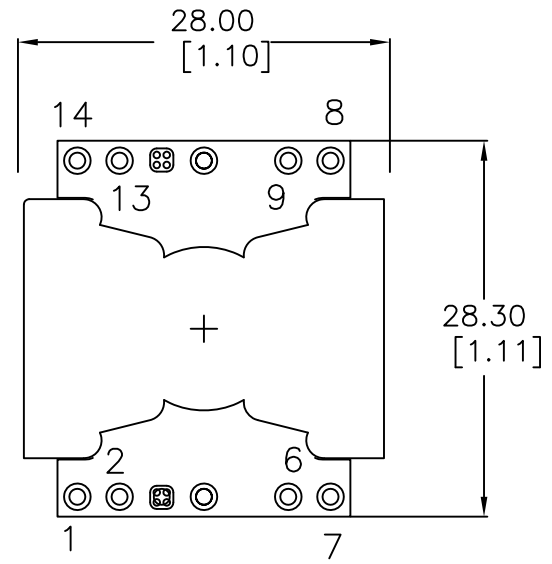


1 2 3 4 5 6 7 8

A
B
C
D
E
F

SUGGESTED PAD LAYOUT



Electrical Information:

1. INDUCTANCE [2-6] = 18 uH Nom @100kHz/1.0V
2. TURNS RATIO [2-6] : [9-13] = 0.136 +/-2%
3. LEAKAGE INDUCTANCE [2-6] : SHORT 9-13 = 100 nH Nom @100kHz
4. DCR [2-6] = 4.4 mohms Nom, DCR [9-13] = 243 mohms Nom,
5. CAPACITANCE 2,6 to 9,13 = 680 pF Max @100kHz
6. DIELECTRIC ISOLATION : >2250 VDC [2,6] : [9-13] : CORE
DIELECTRIC ISOLATION : >1500 VAC [2,6] : [9,13] : Core
DIELECTRIC ISOLATION 500 VDC CORE :[9-13]
7. RoHS Level 6/6 Compliant | Pins 96/4 Sn/Ag Plating

No.	DESCRIPTION	REVISIONS	DATE	APPR
THIRD ANGLE PROJECTION				
CHAMPS TECHNOLOGIES				
TOLERANCES +/- 1.0 UNLESS OTHERWISE INDICATED		SIGN	DATE	Champs No. P26R2-0322-18R0
.XXX ±	.XX ±		9/30/14	Customer
.X	ANGLE ±			Part #:
		APPR		ISSUE A
			SIZE A4	SCALE 2:1
				REV 00