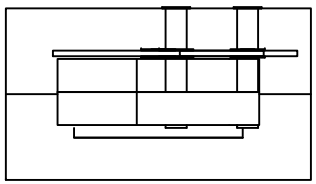
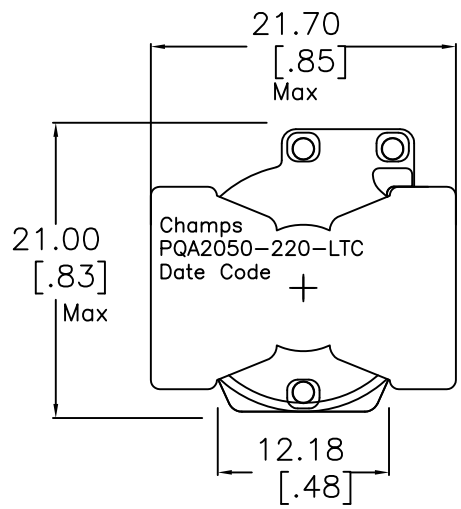


1 2 3 4 5 6 7 8

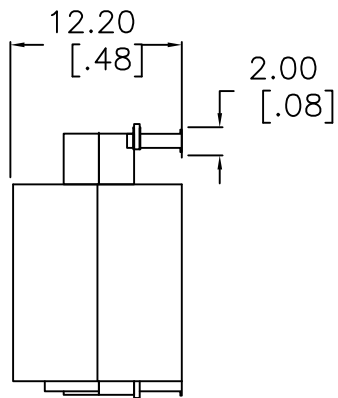
A



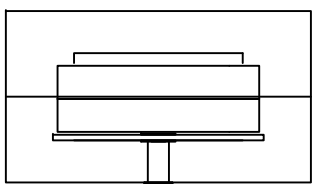
B



C

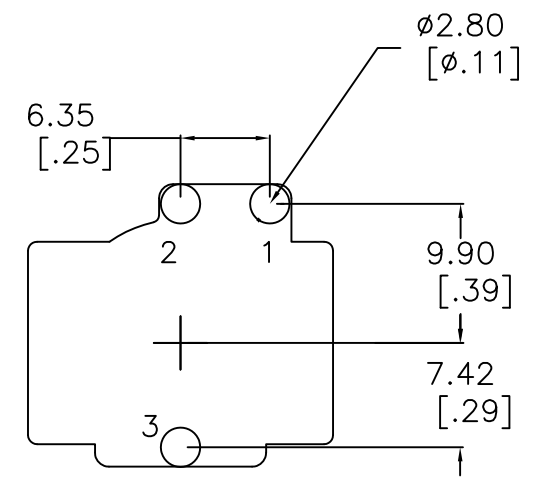


D



E

SUGGESTED
PAD
LAYOUT
Rounded
Pad

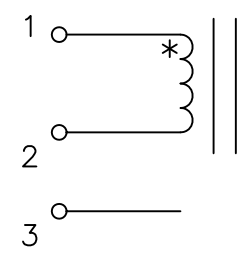


F

ELECTRICAL INFORMATION:

1. INDUCTANCE [1-2] = 220uH Nom, 198 Min. @100kHz/1V 2.5 Adc
2. DCR [1-2] = 54 mohms Nom, 62 Max
3. DIELECTRIC ISOLATION > 500 VDC [1-2] : CORE
4. SATURATION CURRENT @25C = 2.90 Adc | @100C = 2.65Adc
5. HEATING CURRENT FOR 40C RISE AT 25C AMBIENT = 5.75 Adc
6. Operating Ambient Temp. Range -40C to +85C
7. Non-Operating (Storage) Temp Range -55 to +130C
8. RoHS Level 6/6 Compliant

Schematic



No.		DESCRIPTION		REVISIONS	DATE	APPR
THIRD ANGLE PROJECTION						
CHAMPS TECHNOLOGIES						
TOLERANCES +/- 1.0 UNLESS OTHERWISE INDICATED		SIGN	DATE	Champs No. PQA2050-220-LTC		
DRAWN	HE	8/20/08	Customer		ISSUE	REV
CHKD			Part #: INDUCTOR		A	00
APPR			SIZE	SCALE 2:1		