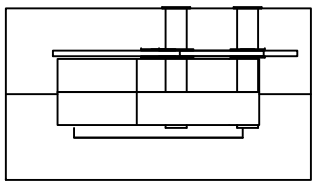
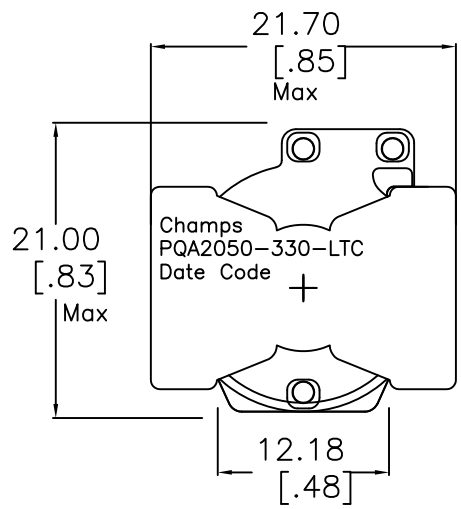


1 2 3 4 5 6 7 8

A

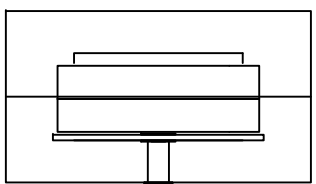


B



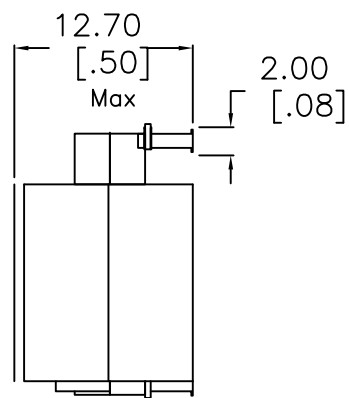
C

D

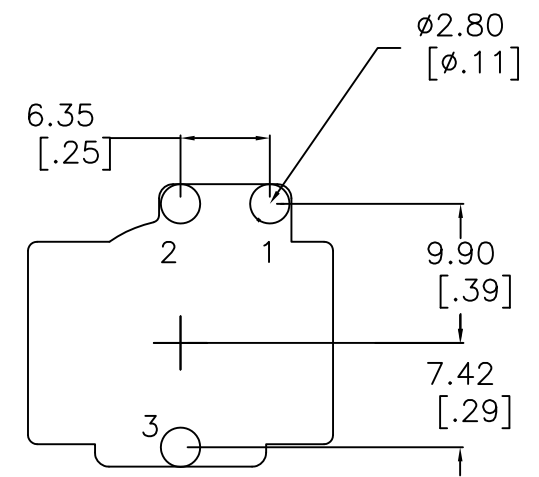


E

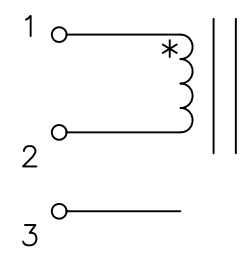
F



SUGGESTED  
PAD  
LAYOUT  
Rounded  
Pad



Schematic



ELECTRICAL INFORMATION:

1. INDUCTANCE [1-2] = 330uH Nom, 305 Min. @100kHz/1V 2.15 Adc
2. DCR [1-2] = 93 mohms Nom, 105 Max
3. DIELECTRIC ISOLATION > 500 VDC [1-2] : CORE
4. SATURATION CURRENT @25C = 2.50 Adc | @85C = 2.25Adc
5. HEATING CURRENT FOR 40C RISE AT 25C AMBIENT = 4.75 Adc
6. Operating Ambient Temp. Range -40C to +100C
7. Non-Operating (Storage) Temp Range -55 to +130C
8. RoHS Level 6/6 Compliant

No.	DESCRIPTION	REVISIONS	DATE	APPR
CHAMPS TECHNOLOGIES				
DRAWN		SIGN	DATE	Champs No. PQA2050-330-LTC
CHKD		HE	8/20/08	Customer
APPR				Part #: INDUCTOR
				ISSUE A
				REV 00
				SIZE
				SCALE 2:1