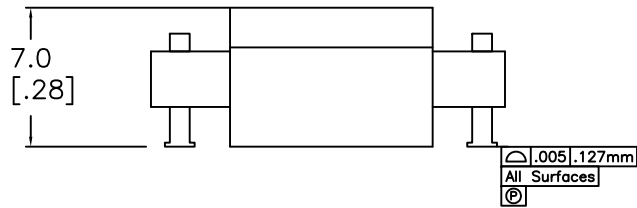
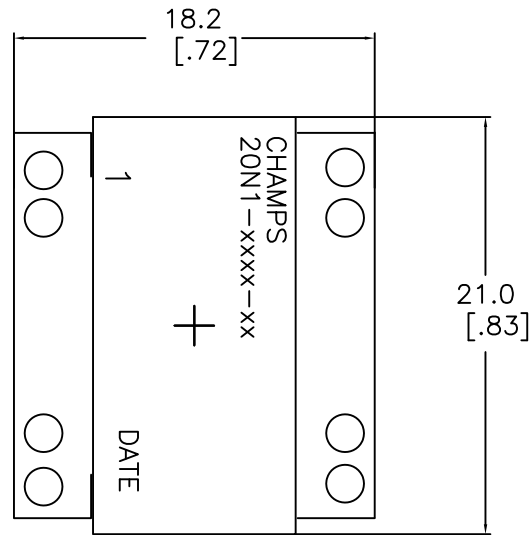
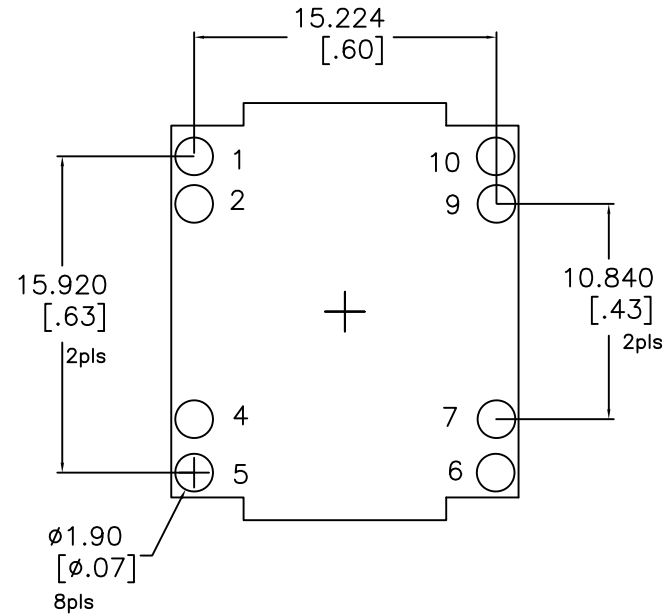


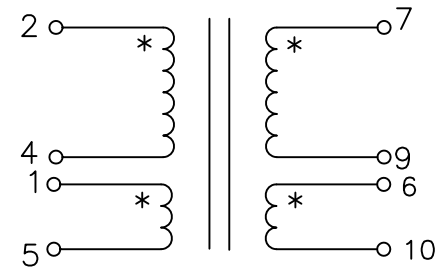
MECHANICAL DIMENSIONS [TOP VIEW]



SUGGESTED PAD LAYOUT [TOP VIEW]



Schematic



NOTES:

1. TURNS RATIO [7-9] : [2-4] = 0.50 ±2%  
TURNS RATIO [1-5] : [2-4] = xx ±2% || [6-10] : [2-4] = xx ±2%
2. DCR [2-4] = 17.5 mohm Nom, [7-9] = 3.5 mohm Nom. [1-5] = 300 mohm Nom.
3. Inductance [2-4]= 40 uH ±10%, 100KHz, 1.0 VRMS @ 25C
4. Leakage Inductance [2-4] Short [7-9] = 100 nH Nom @100 KHz
5. Dielectric Strength [2-4], [1-5] to [7-9] & Core 1500 VDC Nom [Capable 2250Vdc] [7-9], [6-10] to CORE 500 VDC
6. RoHS & REACH Compliant
7. Rated Temperature Range: -55C to +130C [Inclusive of Temp Rise]

No.		DESCRIPTION		REVISIONS	DATE	APPR
THIRD ANGLE PROJECTION						
CHAMPS TECHNOLOGIES						
TOLERANCES/UNITS in MM UNLESS OTHERWISE INDICATED		SIGN	DATE	Champs-Tech PN 20N1-0603-40R		
.XXX ± 0.254	DRAWN	HE	10.24.19	Customer	ISSUE	REV
.XX ± 0.508	CHKD			Part #:	A	00
.X ± 0.78	APPR			SIZE	SCALE 3:1	
ANGLE ±						