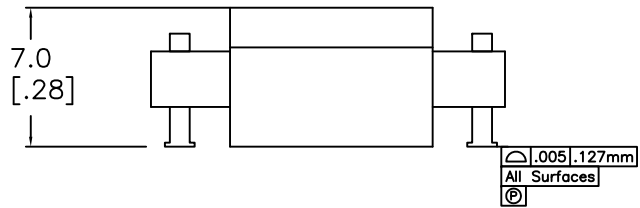
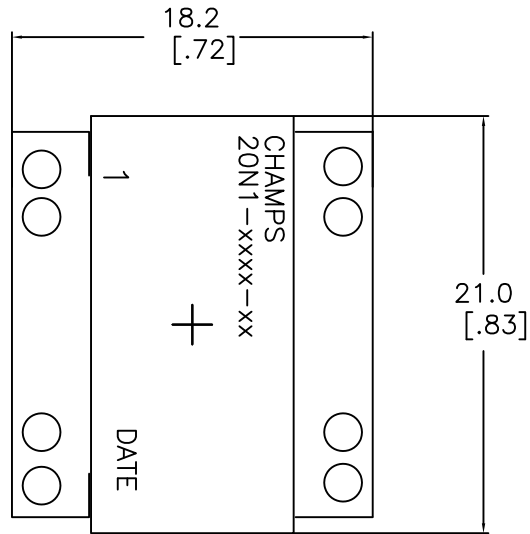
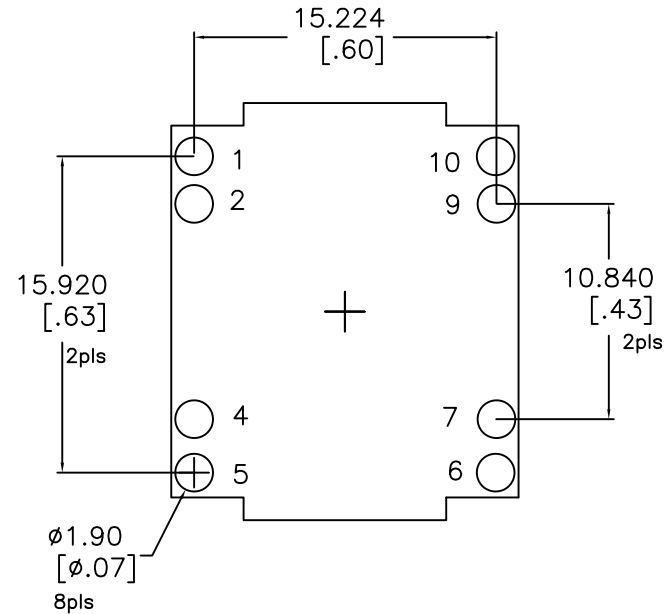


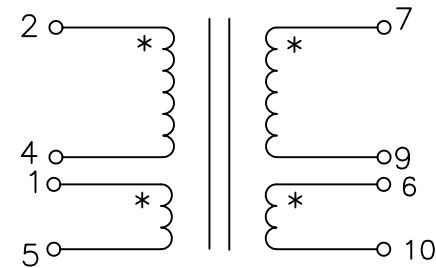
MECHANICAL DIMENSIONS [TOP VIEW]



SUGGESTED PAD LAYOUT [TOP VIEW]



Schematic



NOTES:

1. TURNS RATIO [7-9] : [2-4] = 0.167 ±2%
TURNS RATIO [1-5] : [2-4] = xx ±2% || [6-10] : [2-4] = xx ±2%
2. DCR [2-4] = 77 mohm Nom, [7-9] = 1.7 mohm Nom. [1-5] = 300 mohm Nom.
3. Inductance [2-4]= 80 uH ±10%, 100KHz, 1.0 VRMS @ 25C
4. Leakage Inductance [2-4] Short [7-9] = 200 nH Nom @100 KHz
5. Dielectric Strength [2-4], [1-5] to [7-9] & Core 1500 VDC Nom [Capable 2250Vdc] [7-9], [6-10] to CORE 500 VDC
6. RoHS & REACH Compliant
7. Rated Temperature Range: -55C to +130C [Inclusive of Temp Rise]

No.		DESCRIPTION		REVISIONS	DATE	APPR
THIRD ANGLE PROJECTION						
CHAMPS TECHNOLOGIES						
DRAWN		SIGN	DATE	Champs-Tech PN 20N1-1202-80R		
CHKD		HE	10.24.19	Customer	ISSUE	REV
APPR				Part #:	A	00
				SIZE	SCALE 3:1	