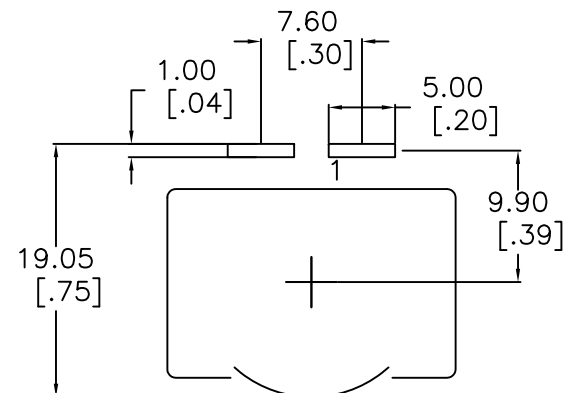
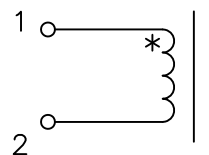


SUGGESTED THRU-HOLE LAYOUT



Schematic



ELECTRICAL INFO:

INDUCTANCE [1-2] = 20uH Nom, 18 Min. @100kHz/1.0V 6Adc

INDUCTANCE [1-2] = 17 uH Min. @100kHz/1.0V 6Adc

DCR [1-2] = 3.6 mohms Nom || 4.5Max

DIELECTRIC ISOLATION > 500 VDC [1-2] : CORE

SATURATION CURRENT @25C = 7Adc | @100C = 6.4Adc

HEATING CURRENT FOR 40C RISE AT 25C AMBIENT = 22 Adc

Operating Temp Range -55C to +130C [Inclusive of Temp Rise]

No.	DESCRIPTION	REVISIONS	DATE	APPR
THIRD ANGLE PROJECTION				
CHAMPS TECHNOLOGIES				
TOLERANCES/UNITS in MM UNLESS OTHERWISE INDICATED		SIGN	DATE	Champs-Tech PN PQI2050-20-HX-TH-10MM
.XXX ± .25	DRAWN	DK	11.19.18	Customer
.XX ± .51	CHKD			Part #: INDUCTOR
.X ANGLE ± 1.0	APPR	HE		ISSUE A REV 00
			SCALE 2:1	