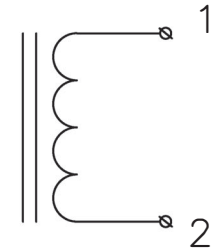
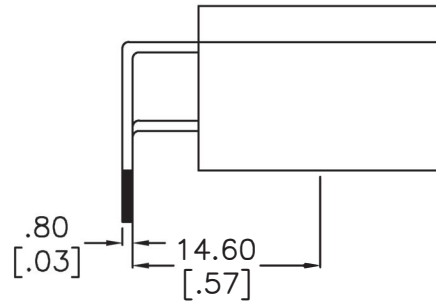
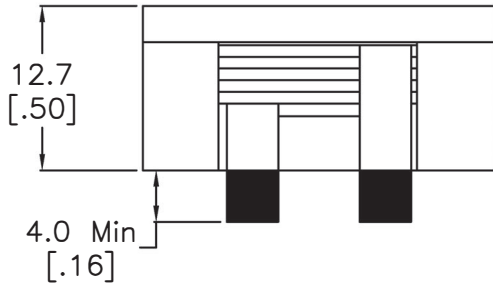
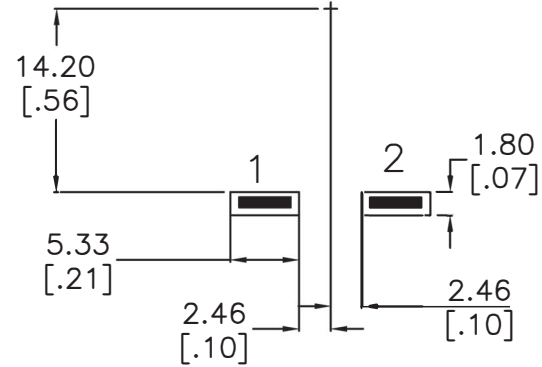
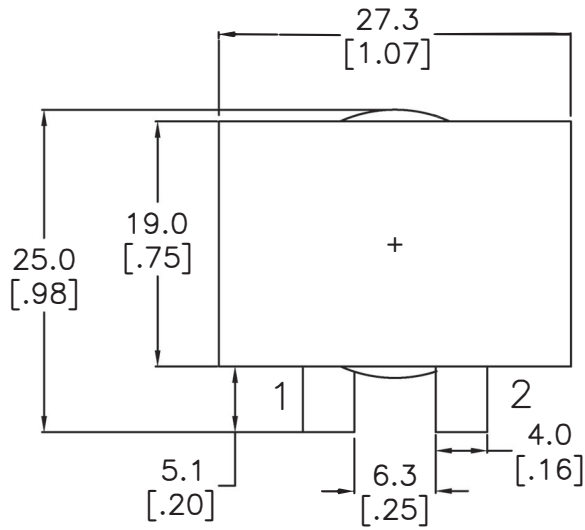
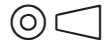


SUGGESTED THRU-HOLE LAYOUT



NOTES:

1. INDUCTANCE [1-2] = 1.4 uH Nom, 1.26 Min. @100kHz 1.0V 60Adc
2. INDUCTANCE [1-2] = 1.15 uH Min @100kHz 1.0V 70Adc @25C
3. DCR [1-2] = 0.55 mohms Nom, 0.68 mohms Max
4. DIELECTRIC ISOLATION > 500 VDC [1-2] : CORE
5. SATURATION CURRENT @25C = 72Adc | @100C = 70Adc
6. HEATING CURRENT FOR 45C RISE AT 25C AMBIENT = 65 Adc
7. Operating Ambient Temperature: -55C to +130C
8. RoHS Level 6/6 Compliance || 96/4 Sn/Ag Pin Composition

No.	DESCRIPTION	REVISIONS	DATE	APPR
THIRD ANGLE PROJECTION				
				
CHAMPS TECHNOLOGIES				
DRAWN		SIGN	DATE	Champs-Tech PN PQI26-1R4-HX-TH
CHKD				Customer ISSUE REV
APPR			01.25.24	Part #: A 00
			SIZE	SCALE