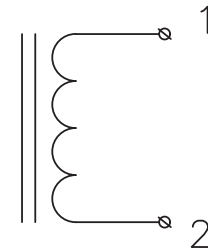
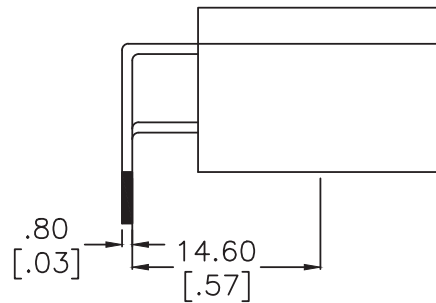
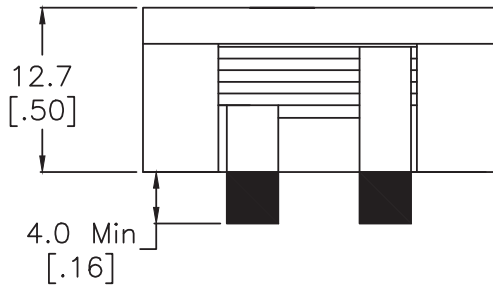
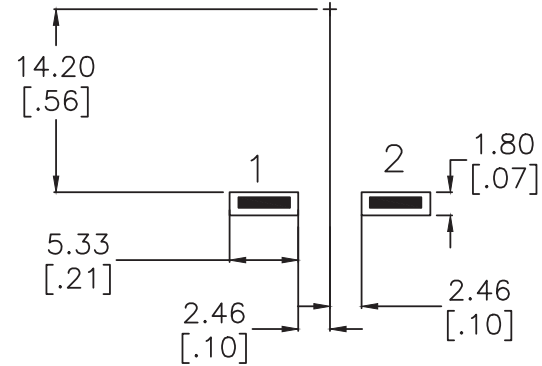
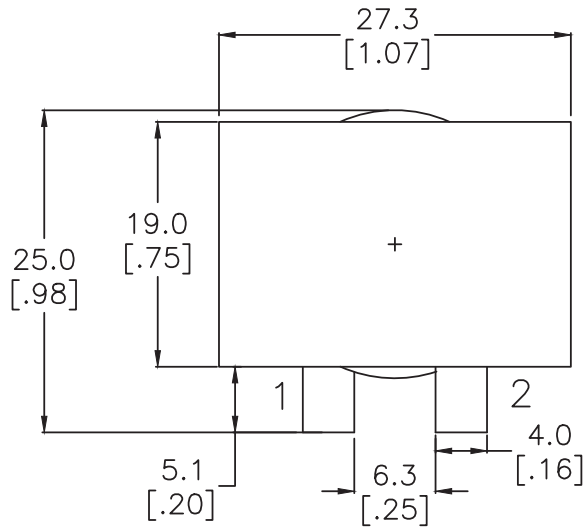


SUGGESTED THRU-HOLE LAYOUT



NOTES:

- INDUCTANCE [1-2] = 3.0 uH Nom, 2.7 Min. @100kHz 1.0V 40Adc
- INDUCTANCE [1-2] = 2.55 uH Min @100kHz 1.0V 45Adc @25C
- DCR [1-2] = 1.05 mohms Nom, 1.36 mohms Max
- DIELECTRIC ISOLATION > 500 VDC [1-2], : CORE
- SATURATION CURRENT @25C = 42Adc | @70C = 38Adc
- HEATING CURRENT FOR 45C RISE AT 25C AMBIENT = 44 Adc
- Operating Ambient Temperature: -55C to +130C [Inclusive of Temp Rise]
- RoHS Level 6/6 Compliance || 96/4 Sn/Ag Pin Composition

No.	DESCRIPTION	REVISIONS	DATE	APPR
THIRD ANGLE PROJECTION				
CHAMPS TECHNOLOGIES				
TOLERANCES/UNITS in MM UNLESS OTHERWISE INDICATED		SIGN	DATE	Champs-Tech PN PQI26-3R-40-HX-TH
.XXX ± 0.254				Customer
.XX ± 0.508				Part #:
.X ANGLE ± 0.78				ISSUE A
			01.25.24	REV 00
			SIZE	SCALE