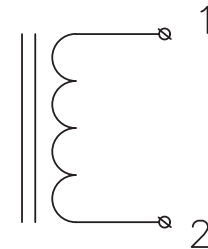
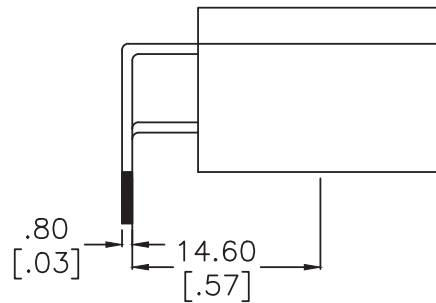
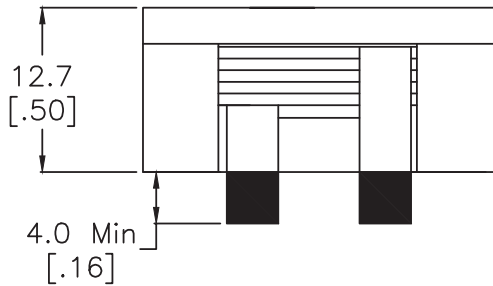
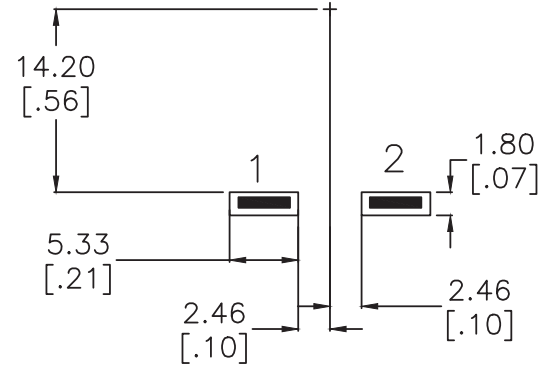
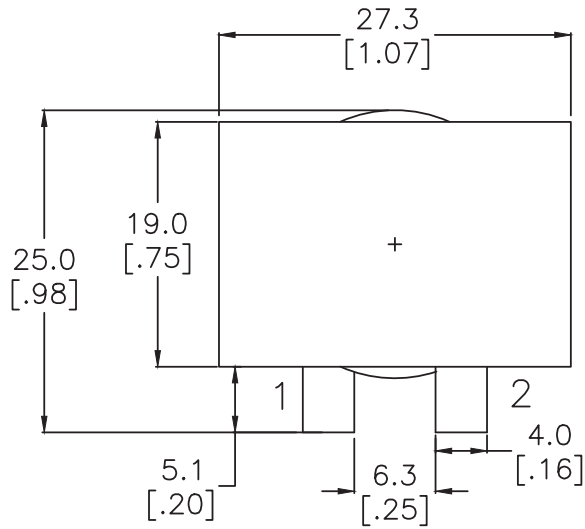


SUGGESTED THRU-HOLE LAYOUT



NOTES:

1. INDUCTANCE [1-2] = 4.7 μ H Nom, 4.2 Min. @100kHz 1.0V 36Adc
2. INDUCTANCE [1-2] = 3.9 μ H Min @100kHz 1.0V 41Adc @25C
3. DCR [1-2] = 1.4 mohms Nom, 1.7 mohms Max
4. DIELECTRIC ISOLATION > 500 VDC [1-2] : CORE
5. SATURATION CURRENT @25C = 41Adc | @100C = 38Adc
6. HEATING CURRENT FOR 45C RISE AT 25C AMBIENT = 40 Adc
7. Operating Ambient Temperature: -55C to +130C
8. RoHS Level 6/6 Compliance || 96/4 Sn/Ag Pin Composition

No.	DESCRIPTION	REVISIONS	DATE	APPR
THIRD ANGLE PROJECTION				
CHAMPS TECHNOLOGIES				
TOLERANCES/UNITS in MM UNLESS OTHERWISE INDICATED		SIGN	DATE	Champs-Tech PN PQI26-4R7-36-HX-TH
.XXX ± 0.254				Customer
.XX ± 0.508				Part #:
.X ANGLE ± 0.78				ISSUE A
APPR			01.25.24	REV 00
			SIZE	SCALE