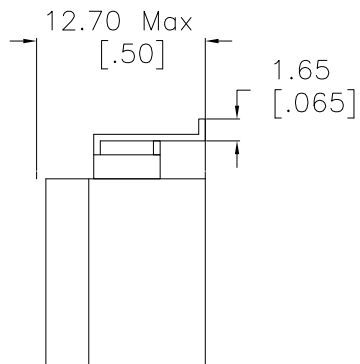
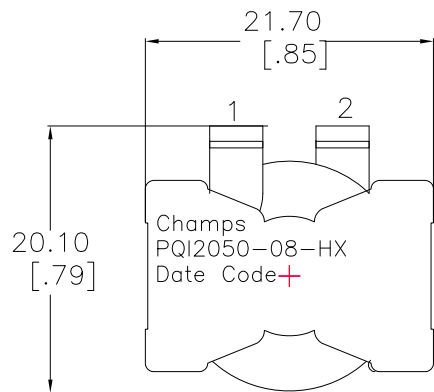
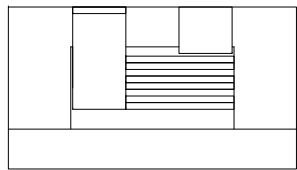
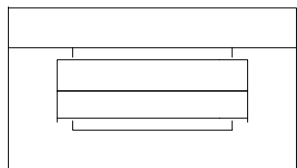
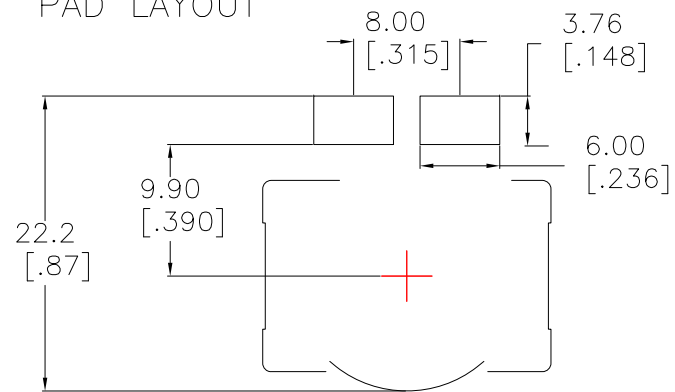


A
B
C
D
E
F

1 2 3 4 5 6 7 8

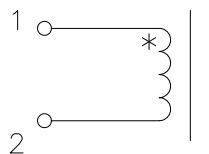


SUGGESTED PAD LAYOUT



INDUCTANCE [1-2] = 8.0uH Nom, 7.0 Min. @100kHz/1.0V 20Adc
 INDUCTANCE [1-2] = 6.35uH Min @100kHz/1.0V 23Adc
 DCR [1-2] = 4.2 mohms Nom, 5.0 Max
 DIELECTRIC ISOLATION > 500 VDC [1-2] : CORE
 SATURATION CURRENT @25C = 23Adc | @85C = 21Adc
 HEATING CURRENT FOR 40C RISE AT 25C AMBIENT = 22Adc

Schematic



No.		DESCRIPTION		REVISIONS	DATE	APPR
THIRD ANGLE PROJECTION						
CHAMPS TECHNOLOGIES						
TOLERANCES +/- 1.0 UNLESS OTHERWISE INDICATED		SIGN	DATE	Champs No. PQI2050-08-HX		
.XXX ±	DRAWN	DK	3/31/10	Customer	INDUCTOR	ISSUE
.XX ±	CHKD			Part #:		A
.X ANGLE ±	APPR	HE	8/27/13	SIZE	SCALE 2:1	00