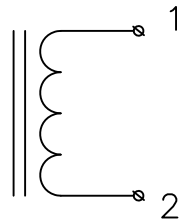
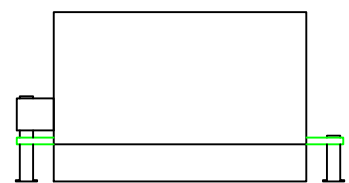
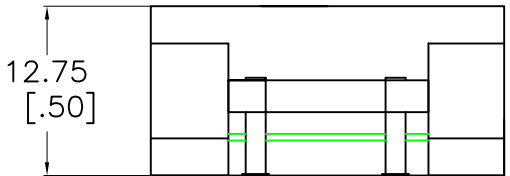
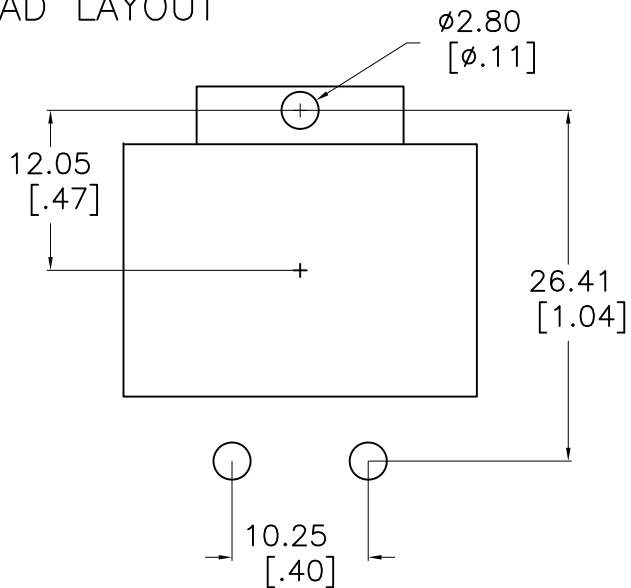
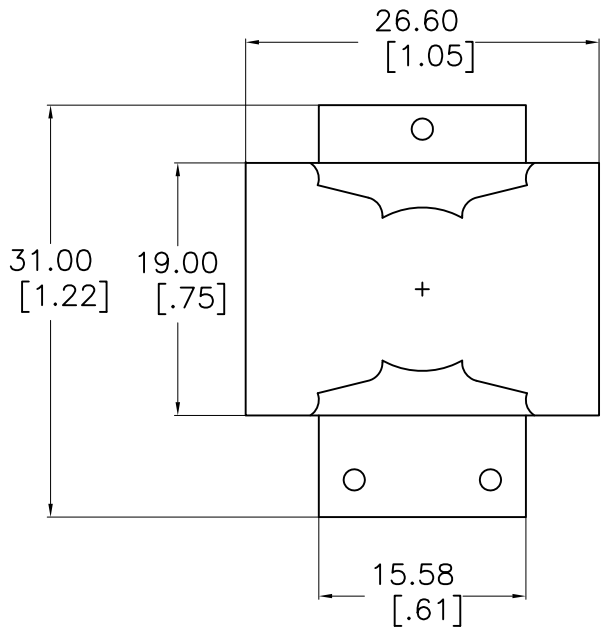


# SUGGESTED PAD LAYOUT



**NOTES:**

1. INDUCTANCE [1-2] = 33 uH Nom, 29.5 Min. @100kHz 1.0V 13.0A<sub>dc</sub>
2. INDUCTANCE [1-2] = 28 uH Min @100kHz 1.0V 15A<sub>dc</sub> @25C
3. DCR [1-2] = 9.0 mohms Nom, 11.0 mohms Max
4. DIELECTRIC ISOLATION > 500 VDC [1-2], : CORE
5. SATURATION CURRENT @25C = 15A<sub>dc</sub> | @100C = 14A<sub>dc</sub>
6. HEATING CURRENT FOR 45C RISE AT 25C AMBIENT = 15 A<sub>dc</sub>
7. Operating Ambient Temperature: -40C to +85C
8. RoHS Level 6/6 Compliance || 96/4 Sn/Ag Pin Composition

No.	DESCRIPTION	REVISIONS	DATE	APPR
CHAMPS TECHNOLOGIES				
THIRD ANGLE PROJECTION				
TOLERANCES +/- 1.0 UNLESS OTHERWISE INDICATED		Champs No. PQI26-33-LTC		
DRAWN	SIGN	DATE	Customer	ISSUE
CHKD			Part #:	A
APPR		10/1/14	SIZE	REV 00
			SCALE 2:1	